

Product Highlights

STEP ANGLE

1.8 deg

FRAME SIZE

20 mm

HOLDING TORQUE

1.4-2.6 N.cm

RATED CURRENT

0.2 / 0.6 A

MOTOR LENGTH

**28 / 34 / 40
mm**

LEAD WIRES

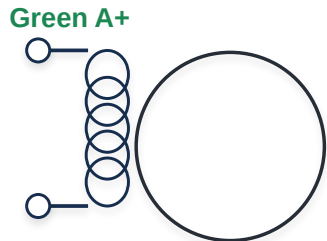
4

Bipolar winding configuration
D-cut output shaft, 4 mm diameter
Optional economy or standard matched driver
Custom winding, shaft and cable options available

Motor Series Model	TSL-20STH2802A4	TSL-20STH2806A4	TSL-20STH3402A4	TSL-20STH3406A4	TSL-20STH4002A4	TSL-20STH4006A4
Step Angle (deg)	1.8	1.8	1.8	1.8	1.8	1.8
Rated Current (A)	0.2	0.6	0.2	0.6	0.2	0.6
Phase Resistance (ohm)	23	3.2	25	4.5	32	5.8
Phase Inductance (mH)	8.2	0.9	8.4	1.2	8.8	1.6
Holding Torque (N.cm)	1.4	1.4	1.8	1.8	2.6	2.6
Detent Torque (N.cm)	0.2	0.2	0.3	0.3	0.5	0.5
Rotor Inertia (g.cm ²)	2.5	2.5	3.2	3.2	4.5	4.5
Motor Length (mm)	28	28	34	34	40	40
Lead Wires (No.)	4	4	4	4	4	4
Motor Weight (g)	50	50	70	70	82	82

Note: The above are our standard models. Electrical parameters, output shafts and matched drivers can be customized upon request.

4-Wire Bipolar Connection



Black A-

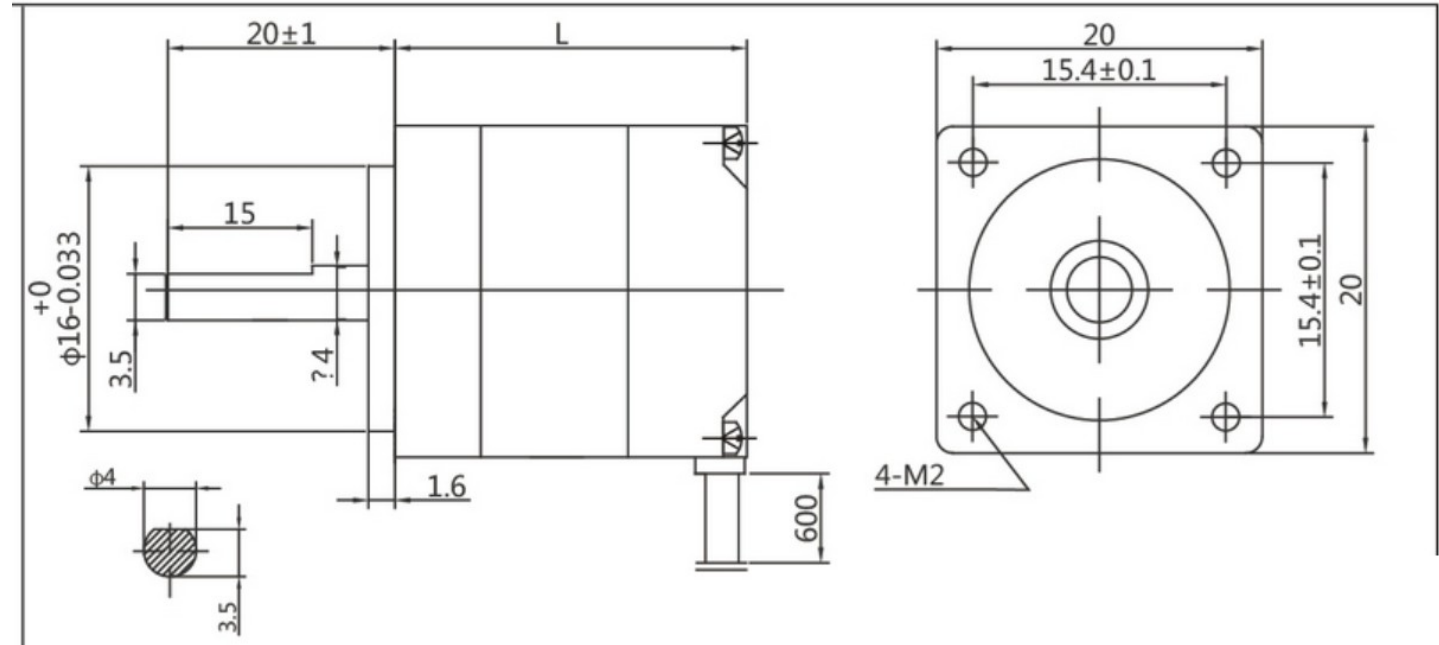


Red B+

Blue B-

2-phase, 4-lead bipolar winding

Confirm lead polarity before connection.



L = 28, 34 or 40 mm depending on model

FLANGE
20 x 20 mm

SHAFT
Dia. 4 x 15 mm

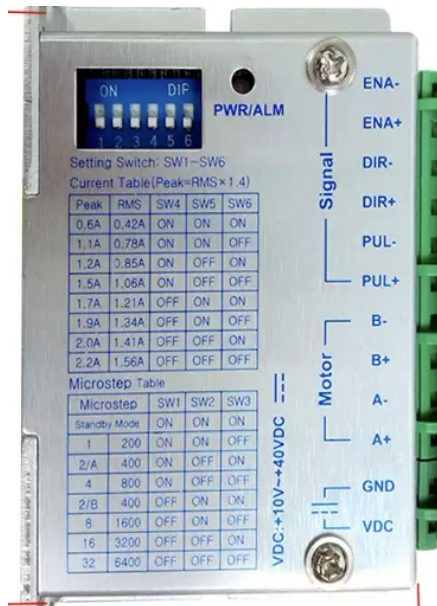
PILOT
Dia. 16 mm

MOUNTING
4 x M2

FLAT
3.5 mm

M422 ECONOMY DRIVER

Cost-effective option



Supply: DC 10-40 V
Peak current: 0.6-2.2 A
Microstep: 200-6400 pulses/rev
Inputs: PUL, DIR and ENA
Compact metal housing

Recommended where purchase cost and compact size are the main priorities.

DM430 STANDARD DRIVER

Preferred matched option



Supply: DC 12-32 V
Peak current: 0.14-3.00 A
RMS current: 0.10-2.20 A
Microstep: 200-20,000 pulses/rev
Inputs: PUL, DIR and ENA

Wider current adjustment range supports low-current NEMA 8 windings more conveniently.

Driver images and switch tables are for reference. Confirm the final driver model and current setting before operation.