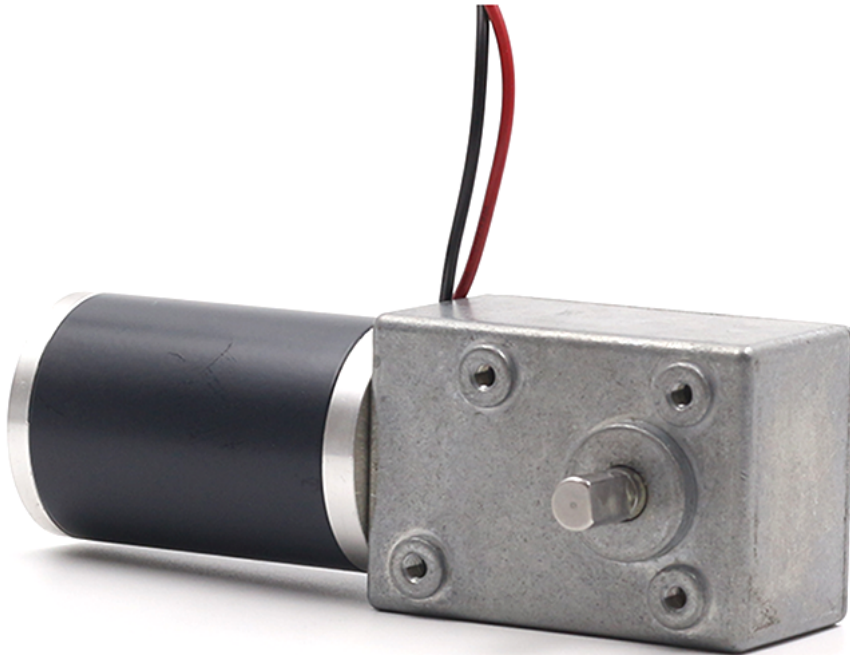


TSL-5882GW-50ZY

Ø50 mm Brushed DC Motor With Worm Gearbox



Configuration Summary

Motor Type	Brushed DC motor
Gearbox	Right-angle worm gearbox
Nominal Voltage	12 V / 24 V
Motor Diameter	Ø50 mm
Gearbox Size	82.5 x 58 x 44 mm
Motor Length	78 mm
Output Shaft	Ø10 mm, 20 mm extension
Shaft Options	Single / dual output shaft
Reduction Ratios	16:1 to 1015:1

Product Overview

The TSL-5882GW-50ZY combines a Ø50 mm brushed DC motor with a robust right-angle worm gearbox. It is available with single or dual output shafts and a wide selection of reduction ratios for low-speed, high-torque applications such as automation equipment, lifting mechanisms, valves and positioning systems.

Performance Data - 12 V DC

TSL-5882GW-50ZY

Reduction Ratio	No Load		Rated Load			Stall	
	Speed	Current	Speed	Current	Torque	Torque	Current
i:1	RPM ±10%	A	RPM ±10%	A	kgf.cm	kgf.cm	A
16	440	2	280	8.5	10	25	16
16	310	1.2	185	6.3	10	20	12
32	190	2	126	6.5	20	40	16
48	150	2	99	6.4	30	60	14.5
48	120	1.5	83	5.5	35	50	13
89	80	2	58	6.5	50	110	19
89	68	1.8	45	5.8	60	100	15.5
169	42	1.7	30	5.3	70	180	16
169	35	1.5	26	5.2	80	160	15
225	24	1.5	18	6.2	120		17
392	18	2	14	6.5	180		16.5
510	12	1.7	8	6.2	200		17.5
694	9	2	6	5.8	200	Forbid Stall	17.5
1015	6	1.5	4	6	200		15.5
1015	3	0.3	2	1.5	200		5
1015	1.5	0.3	1	1	200		2

Performance parameters are reference values. Actual performance may vary with load, temperature, power supply and manufacturing tolerance. Custom voltage, speed, torque, shaft and gearbox specifications are available on request. Do not operate the motor at stall where marked "Forbid Stall".

Performance Data - 24 V DC

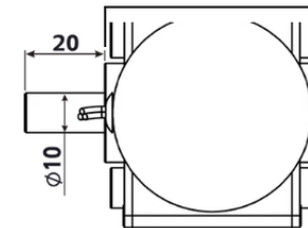
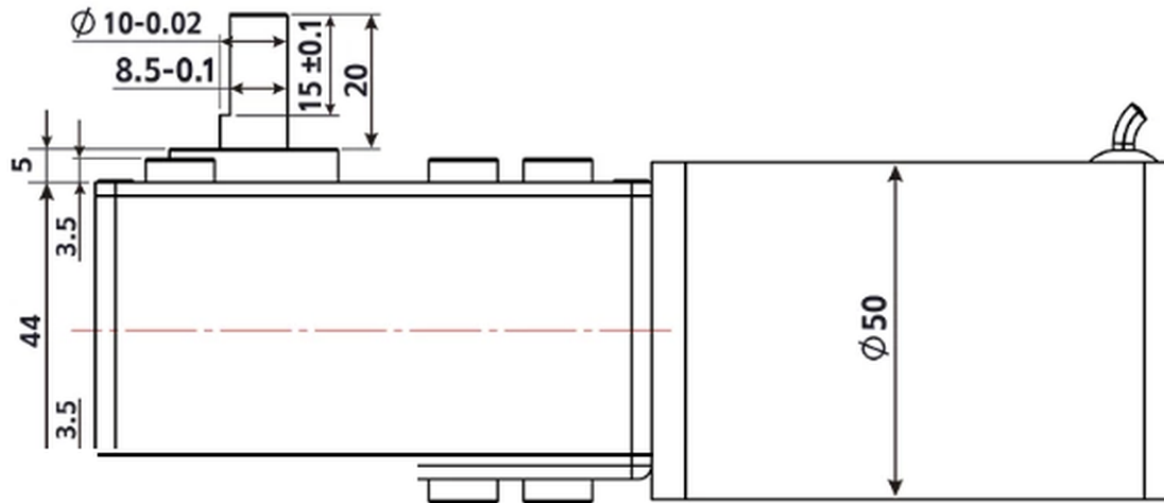
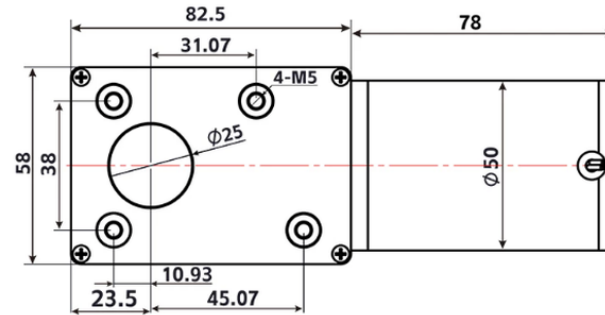
TSL-5882GW-50ZY

Reduction Ratio	No Load		Rated Load			Stall	
	Speed	Current	Speed	Current	Torque	Torque	Current
i:1	RPM ±10%	A	RPM ±10%	A	kgf.cm	kgf.cm	A
16	440	1.2	295	4.2	10	30	12
16	310	0.6	205	3	12	25	8
32	190	1	135	3.8	25	50	13
48	150	1.1	105	6	40	140	16
48	120	0.9	86	4.5	50	100	12
89	90	1.2	65	5.5	55	180	16
89	70	0.8	51	3.5	70	160	12
169	50	0.9	42	6.2	110		18.5
169	35	0.9	26	3.2	140		11
225	24	0.7	17	4	150		12.5
392	18	0.9	13	3.5	200		13
510	12	0.7	8	3.6	200	Forbid Stall	12
694	9	0.9	6	3	200		13.5
1015	6	0.7	4	3.5	200		11.5
1015	3	0.4	2	1.3	200		13.5
1015	1.5	0.35	1	0.9	200		2

Performance parameters are reference values. Actual performance may vary with load, temperature, power supply and manufacturing tolerance. Custom voltage, speed, torque, shaft and gearbox specifications are available on request. Do not operate the motor at stall where marked "Forbid Stall".

Mechanical Dimensions - Single Output Shaft

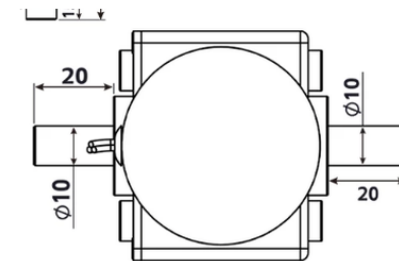
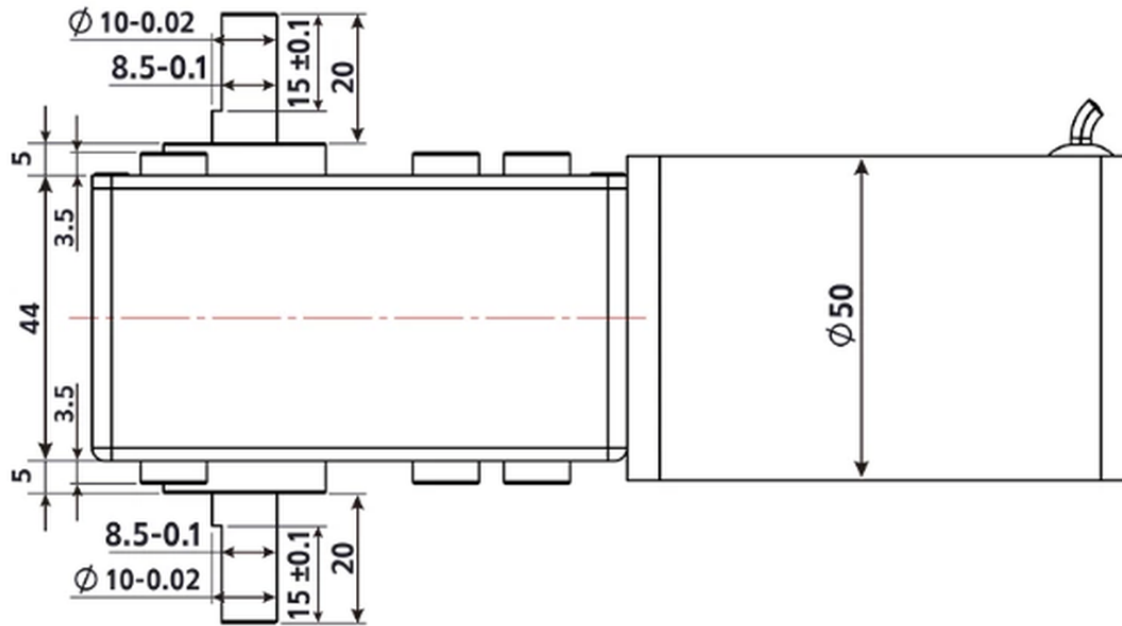
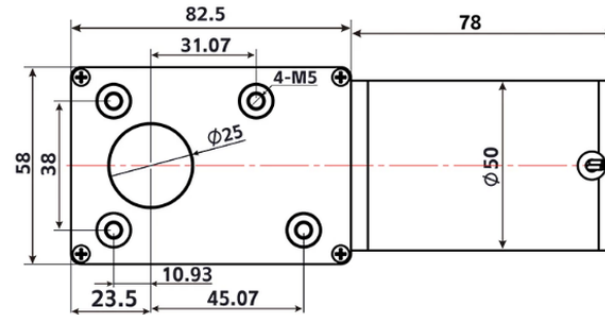
TSL-5882GW-50ZY | Unit: mm



Unless otherwise specified, dimensions are in millimetres.

Mechanical Dimensions - Dual Output Shaft

TSL-5882GW-50ZY | Unit: mm



Unless otherwise specified, dimensions are in millimetres.